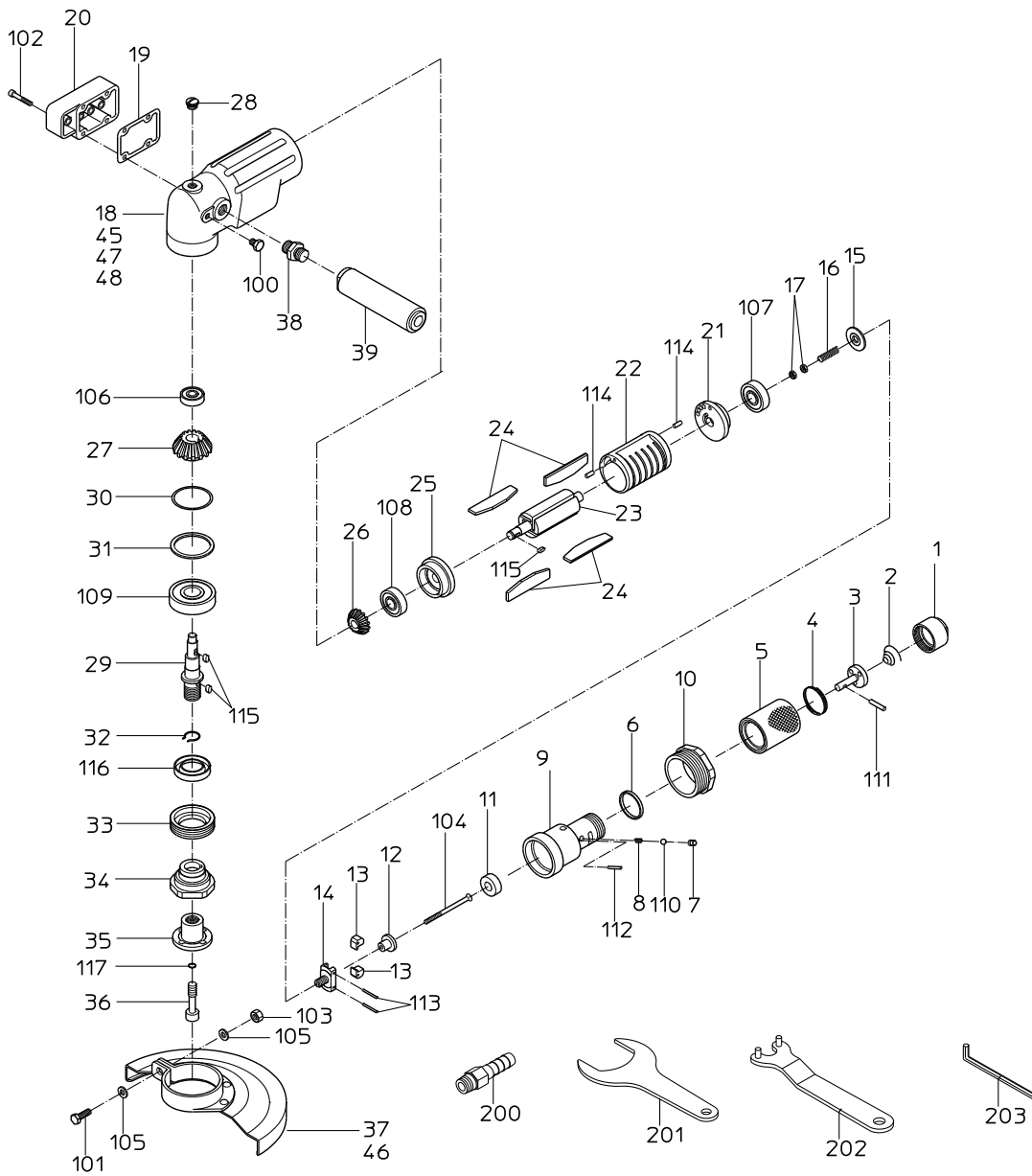


# PARTS LIST

## NAG-70S

505397



MODEL : **NAG-70S**

505397

ITEM	PART NO.	PART NAME	QTY	NOTE
1	15007730	INLET BUSHING	1	
2	15007640	THROTTLE SPRING	1	
3	15016883	THROTTLE VALVE	1	
4	15007660	PUSH SPRING	1	
5	15016946	GRIP	1	
6	15008030	PILOT RING	1	
7	15008070	BALL BUSH	1	
8	15007650	SPRING	1	
9		HANDLE	1	Available as HANDLE WB
10	15007570	LOCK NUT	1	
11		GOVERNOR BUSH	1	Available as HANDLE WB
12	15007690	GOVERNOR VALVE	1	
13	15007390	GOVERNOR WEIGHT	2	
14	15007380	GOVERNOR BODY	1	
15	15007550	BEARING COVER	1	
16	15007630	GOVERNOR SPRING	1	
17	15007720	GOVERNOR NUT	2	
18	15017214	ROTOR CASE	1	
19	15007920	EXHAUST PACKING	1	
20	15017218	EXHAUST COVER	1	
21		TOP PLATE	1	Available as TOP PLATE WBR
22	15007440	CYLINDER	1	
23	15007480	ROTOR	1	
24	15016103	VANE	4	
25		BOTTOM PLATE	1	Available as BOTTOM PLATE WBR
26	15008290	ROTOR GEAR	1	
27	15008300	SPINDLE GEAR	1	
28	15016160	OIL PLUG	1	
29	15007530	STONE SPINDLE	1	
30	15007560	SHIN WASHER	1	
31	15007541	BEARING WASHER	1	
32	15008040	STOPPER RING	1	
33	15007520	SPINDLE NUT	1	
34	15015733	STONE FLANGE	1	
35	15016065	WHEEL NUT	1	
36	15007580	LOCK SCREW	1	
37	15008280	STONE COVER	1	
38	15007820	HOLDER JOINT	1	
39	15016909	HOLDER	1	
45		NAME PLATE (MODEL)	1	
46	18400084	NAME PLATE (ARROW)	1	
47	18400128	NAME PLATE (ON/OFF)	1	
48	18400463	NAME PLATE (WARNING)	1	
100	72206008	BOLT	1	
101	72206020	BOLT	1	
102	74004020	CAP SCREW	4	
103	76111206	NUT	1	
104	28100258	C-R. FLAT SCREW	1	

**NIPPON PNEUMATIC MFG. CO., LTD.**

MODEL : **NAG-70S**

505397

ITEM	PART NO.	PART NAME	QTY	NOTE
105	76310206	WASHER	2	
106	28201067	BALL BEARING	1	
107	28201079	BALL BEARING	1	
108	28201087	BALL BEARING	1	
109	28201099	BALL BEARING	1	
110	25502120	STEEL BALL	1	
111	28206062	PIN	1	
112	28207037	ROLLER PIN	1	
113	28208027	SPRING PIN	2	
114	28208056	SPRING PIN	2	
115	28209016	KEY	3	
116	28302011	OIL SEAL	1	
117	61200060	O RING	1	
200	24901041	HOSE NIPPLE	1	
201	24999116	SINGLE ENDED SPANNER	1	
202	24999132	FLANGE SPANNER	1	
203	25004060	SPANNER	1	
		ASSY LIST		
	15015280	GOVERNOR CP		
		12, 13, 14, 16, 17, 104, 113		
	15015281	GOVERNOR BODY CP		
		13, 14, 113		
	15016948	HANDLE CP		
		1, 2, 3, 4, 5, 6, 7, 8, 9,		
		11, 110, 111, 112		
	15015284	HANDLE WB		
		9, 11		
	15017215	RPTOR CASE CP		
		18, 28, 38, 100		
	15015291	STONE COVER CP		
		37, 46, 101, 103, 105		
	15015668	BOTTOM PLATE WBR		
		25, 108		
	15015682	TOP PLATE WBR		
		21, 107		