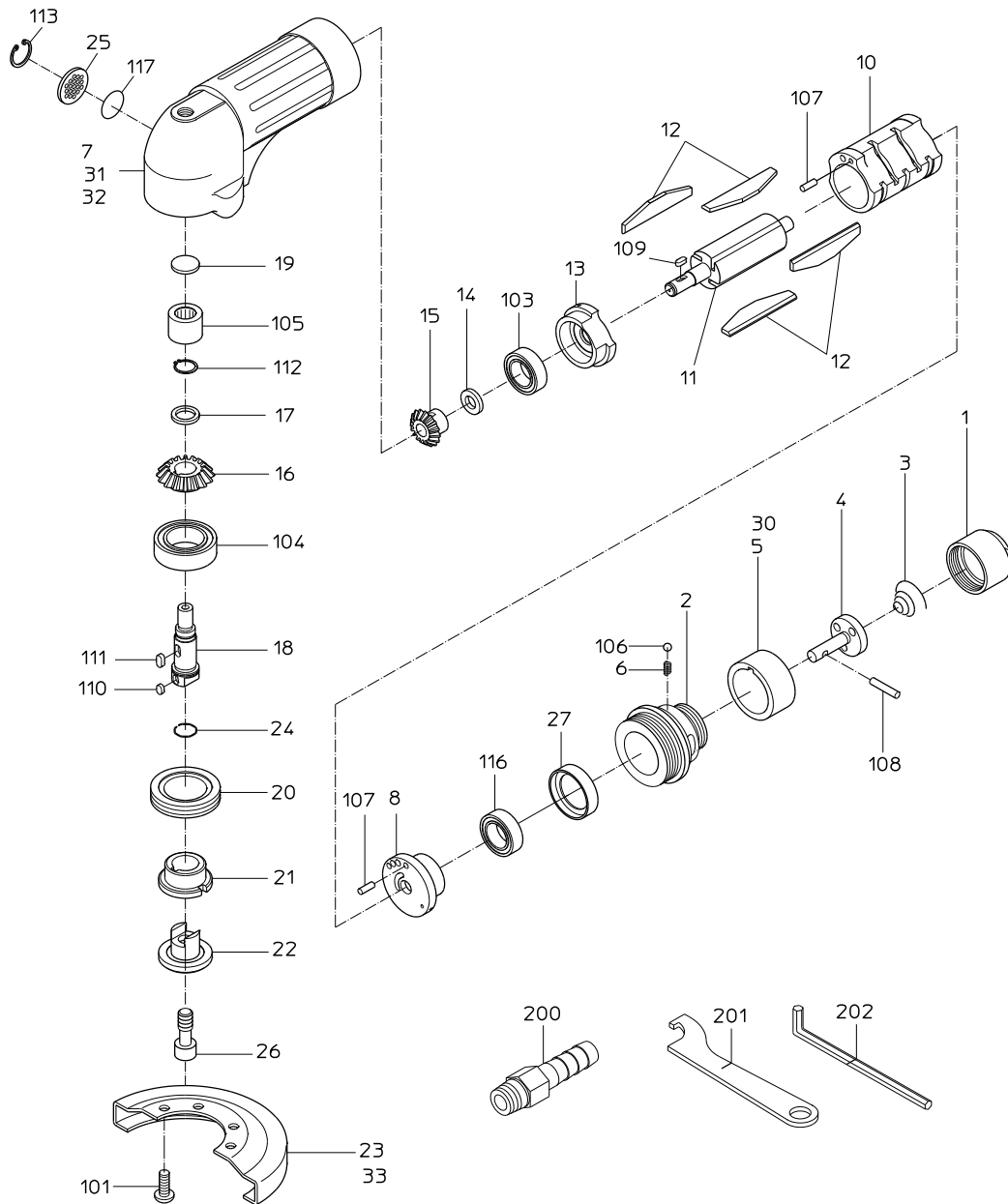


PARTS LIST

NAG-1F-04

506143



MODEL : **NAG-1F-04**

506143

ITEM	PART NO.	PART NAME	QTY	NOTE
1	15005040	INLET BUSHING	1	
2	15004960	HANDLE	1	
3	15007640	THROTTLE SPRING	1	
4	15001020	THROTTLE VALVE	1	
5	15005060	GRIP	1	
6	15007650	SPRING	1	
7	15017219	ROTOR CASE	1	
8	15016146	TOP PLATE	1	
10	15015780	CYLINDER	1	
11	15016074	ROTOR	1	
12	15016098	VANE	4	
13	15016075	BOTTOM PLATE	1	
14	15005250	ROTOR WASHER	1	
15	15016226	ROTOR GEAR	1	
16	15005270	SPINDLE GEAR	1	
17	15005260	SPINDLE WASHER	1	
18	15016072	STONE SPINDLE	1	
19	15015790	WASHER	1	
20	15007100	SPINDLE NUT	1	
21	15016056	STONE FLANGE	1	
22	15016063	WHEEL NUT	1	
23		STONE COVER	1	Available as STONE COVER CP
24	15007130	STOPPER RING	1	
25	15015773	EXHAUST COVER	1	
26	15015388	LOCK SCREW	1	
27	15016127	CAP	1	
30	18400128	NAME PLATE (ON/OFF)	1	
31	18400463	NAME PLATE (WARNING)	1	
32		NAME PLATE (MODEL)	1	
33	18400739	NAME PLATE (ARROW)	1	
101	28100729	CAP SCREW	4	
103	28201072	BALL BEARING	1	
104	28201098	BALL BEARING	1	
105	28203082	NEEDLE BEARING	1	
106	25502120	STEEL BALL	1	
107	28206036	PIN	2	
108	28207063	ROLLER PIN	1	
109	28209010	KEY	1	
110	28209015	KEY	1	
111	28209016	KEY	1	
112	25307480	RETAINING RING	1	
113	25307922	RETAINING RING	1	
116	28201071	BALL BEARING	1	
117	25401270	O RING	1	
200	24901038	HOSE NIPPLE	1	
201	24999125	TURNING SPANNER	1	
202	25004060	SPANNER	1	
	15015795	HANDLE CP		
		1, 2, 3, 4, 5, 6, 106, 108		
	15017059	STONE COVER CP		
		23, 115		

NIPPON PNEUMATIC MFG. CO., LTD.