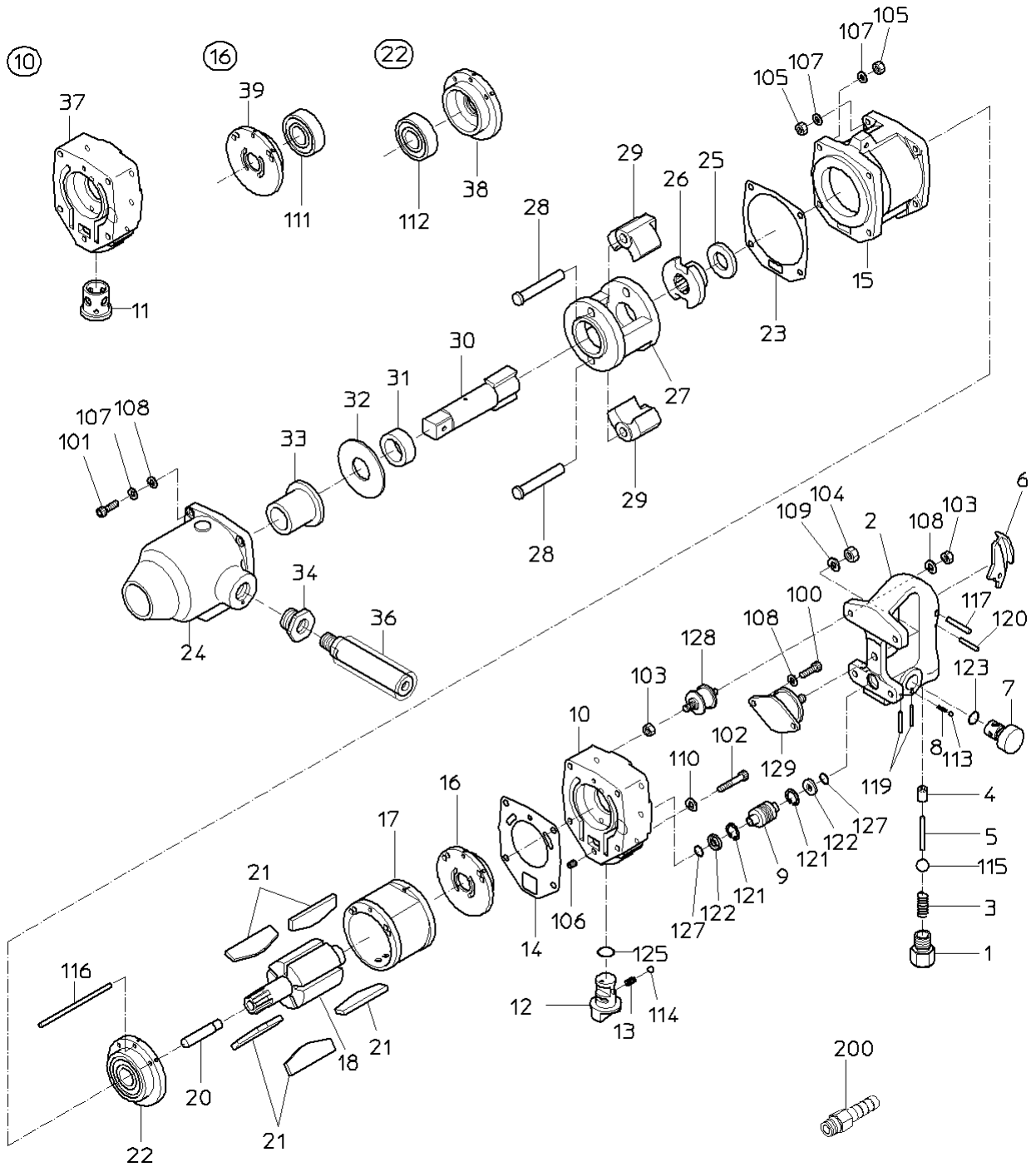


PARTS LIST

NW-19AA(P)

520648



PARTS LIST

(1/2)

型式 MODEL: **NW-19AA** 520648

符号 ITEM	品番 PART NO.	PART NAME	個数 Q'ty
1	15201760	INLET BUSHING	1
2	Not available separately. Available only as HANDLE WB or HANDLE CP (P/No. 15219724 No. 15219225)	HANDLE	1
3	15201740	THROTTLE SPRING	1
4	Not available separately. Available only as HANDLE WB or HANDLE CP (P/No. 15219724 No. 15219225)	THROTTLE BUSH	1
5	15201780	THROTTLE PIN	1
6	15201840	LEVER	1
7	15203530	ADJUSTER VALVE	1
8	15205040	SPRING	1
9	15203610	PIPE	1
10	15220105	CASE CAP WB	1
12	15220079	REVERSE VALVE	1
13	15202120	SPRING	1
14	15202390	TOP SEAL	1
15	15202460	ROTOR CASE	1
16	15219210	TOP PLATE WBR	1
17	15219994	CYLINDER	1
18	15202451	ROTOR	1
20	15202480	ROTOR PIN	1
21	15202430	VANE	5
22	15219212	BOTTOM PLATE WBR	1
23	15202400	BOTTOM SEAL	1
24	Not available separately. Available only as HAMMER CASE CP (P/No. 15219807)	HAMMER CASE	1
25	15202280	SPACER	1
26	15202300	SCREW DRIVER	1
27	15202350	HAMMER FRAME	1
28	15202340	HAMMER PIN	2
29	15202330	HAMMER	2
30	15202270	ANVIL	1
31	15202260	ANVIL BUSH	1
32	15202290	THRUST WASHER	1
33	Not available separately. Available only as HAMMER CASE CP (P/No. 15219807)	CASE BUSH	1
34	15202380	HOLDER SOCKET	1
36	15220096	VIBRATION ISOLATING HOLDER	1
100	74006016	CAP SCREW	2
101	74006035	CAP SCREW	4
102	74006055	CAP SCREW	4
103	76111206	HEX. NUT	8
104	76111208	HEX. NUT	1
105	25122010	NYLON-HEX. NUT	8
106	25105020	SET SCREW	1
107	76310206	WASHER	12
108	76420106	SPRING WASHER	10
109	76420108	SPRING WASHER	1
110	28100525	SPRING WASHER	4
113	25502120	STEEL BALL	1
114	28205026	STEEL BALL	1
115	28205052	RUBBER BALL	1
116	28206113	PIN	1
117	28207224	ROLLER PIN	1
119	25305020	SPRING PIN	2
120	28208109	SPRING PIN	1
121	25307740	RETAINING RING	2
122	28302074	OIL SEAL	2
123	61200120	O RING	1
125	61200200	O RING	1
127	63200120	O RING	2
128	28699178	RUBBER VIBRATION ISOLATOR	4
129	28699179	RUBBER VIBRATION ISOLATOR	1
200	24901041	HOSE NIPPLE	1

PARTS LIST

(2/2)

型式 MODEL: **NW-19AA** 520648

符号 ITEM	品番 PART NO.	PART NAME	個数 Q'ty
	CP リスト		
【16】	15219210	TOP PLATE WBR	
(39)	Not available as a single part.	TOP PLATE	1
(111)	28201083	BALL BEARING	1
【22】	15219212	BOTTOM PLATE WBR	
(38)	Not available as a single part.	BOTTOM PLATE	1
(112)	28201091	BALL BEARING	1
【10】	15220105	CASE CAP WB	
(11)	Not available as a single part.	REVERSE BUSH	1
(37)	Not available as a single part.	CASE CAP	1
	15219225	HANDLE CP	
	1, 2, 3, 4, 5, 6, 7, 8, 113, 115, 117, 119, 120, 121, 122, 123, 127		
	15220107	CASE CAP CP	
	10, 11, 12, 13, 106, 114, 121, 122, 125, 127		
	15219724	HANDLE WB	
	2, 4, 120		
	15219807	HAMMER CASE CP	
	24, 33, 34		