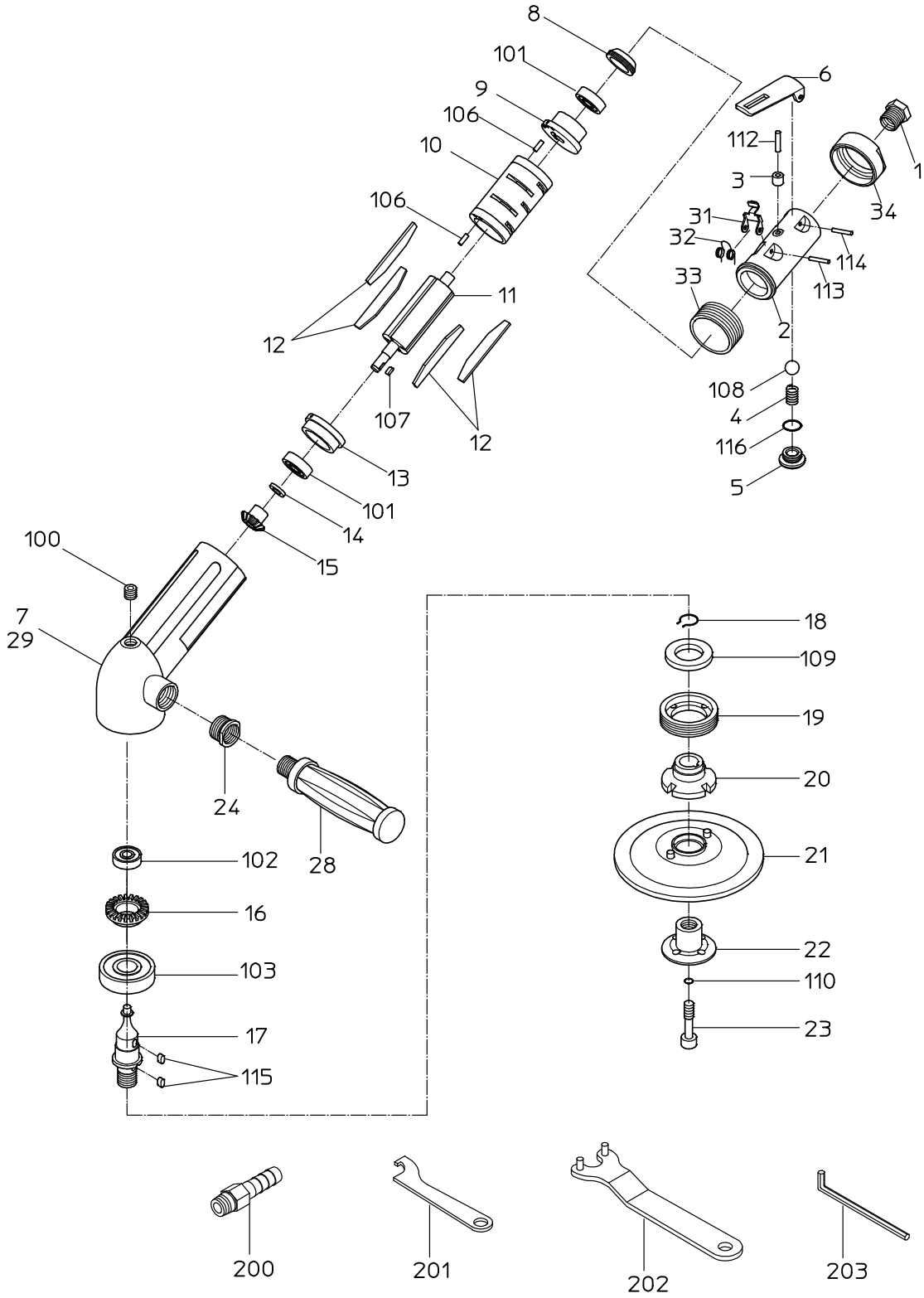


# PARTS LIST

## NSG-180XCLW

504845



日本ニューマチック工業株式会社  
 NIPPON PNEUMATIC MFG. CO., LTD.

# PARTS LIST

(1/2)

MODEL : **NSG-180XCLW**

504845

ITEM	PART NO.	PART NAME	Q' ty
1	15201760	INLET BUSHING	1
2	Not available separately. Available only as HANDLE WB (P/No. 15016901)	HANDLE	1
3	Not available separately. Available only as HANDLE WB (P/No. 15015261)	THROTTLE BUSH	1
4	15102340	THROTTLE SPRING	1
5	15005490	THROTTLE PLUG	1
6	15016036	LEVER	1
7	Not available separately. Available only as ROTOR CASE AS (P/No. 15016931)	ROTOR CASE	1
8	15003450	PLATE NUT	1
9	15012070	TOP PLATE	1
10	15012060	CYLINDER	1
11	15012100	ROTOR	1
12	15012080	VANE	4
13	15012090	BOTTOM PLATE	1
14	15005250	ROTOR WASHER	1
15	15015774	ROTOR GEAR	1
16	15015775	SPINDLE GEAR	1
17	15012140	STONE SPINDLE	1
18	15008040	STOPPER RING	1
19	15008010	SPINDLE NUT	1
20	15012040	PAPER FLANGE	1
21	15012030	PAPER PAD	1
22	15012020	PAPER NUT	1
23	15008090	LOCK SCREW	1
24	15006290	SOCKET	1
28	15006040	HOLDER	1
29		NAME PLATE	1
31	15005520	STOPPER	1
32	15017003	SPRING	1
33	15012200	AIR CONNECTOR	1
34	15005530	LOCK NUT	1
100	28100501	HEX. SOCKET PLUG	1
101	28201072	BALL BEARING	2
102	28201069	BALL BEARING	1
103	28201091	BALL BEARING	1
106	28208056	SPRING PIN	2
107	28209010	KEY	1
108	28205051	RUBBER BALL	1
109	28302013	OIL SEAL	1
110	61200060	O RING	1
112	28207233	ROLLER PIN	1
113	28208061	SPRING PIN	1
114	25305020	SPRING PIN	1
115	28209016	KEY	2
116	61200120	O RING	1

# PARTS LIST

(2/2)

MODEL : **NSG-180XCLW**

504845

ITEM	PART NO.	PART NAME	Q' ty
201	24999128	TURNING SPANNER	1
202	24999132	FLANGE SPANNER	1
203	25004060	SPANNER	1
	Contents of CP		
	15016901	HANDLE WB	
	2, 3		
	15015670	BOTTOM PLATE WBR	
	13, 101		
	15015684	TOP PLATE WBR	
	9, 101		
	15016931	ROTOR CASE AS	
	7, 24, 100		